



TITAN

 **ORIENTCERAMICA**

# ABOUT TITAN

SOMETHING OF GREAT STRENGTH

- EXTREMELY IMPORTANT, LARGE AND POWERFUL - ONE OF ITS KIND
- THE WORD TITAN IS DERIVED FROM GREEK MYTHOLOGY MEANING 'FAMILY OF GIANTS' WHICH DEEPLY RESONATES WITH THE NEW 100x100 SIZE

A modern, multi-story building with a light-colored facade and large glass windows. The word "ORIENT" is displayed in large, blue, 3D letters on the top left corner of the building. The sky is a clear, light blue.

ORIENT

## ABOUT

ORIENT CERAMICA IS A PART OF ORIENT GROUP OF COMPANIES WHICH TRAILS A LEGACY OF 60 YEARS OF INNOVATION, QUALITY, AND AN EXTENSIVE JOURNEY TO EXCELLENCE. WE HAVE ESTABLISHED A STATE-OF-THE-ART ITALIAN PRODUCTION FACILITY TO INTRODUCE EUROPEAN STANDARD GRÉS PORCELAIN TILES FOR THE PAKISTANI MARKET. ORIENT CERAMICA IS A PREMIUM BRAND THAT HAS ESTABLISHED ITSELF AS THE MOST TRUSTED PROVIDER OF AN AFFLUENT LIFESTYLE IN PAKISTAN. OUR GRÉS PORCELAIN TILES ARE WELCOMED IN A BROAD RANGE OF INTERIOR SETTINGS DUE TO THEIR UNIQUE VERSATILITY IN APPLICATION. AVAILABLE IN A WIDE RANGE OF SIZES, COLORS, TEXTURES, AND FINISHES TO BEAUTIFY MUNDANE AND ORDINARY SPACES AND TURN THEM INTO EXTRAORDINARY INTERIORS.



## WHY ORIENT CERAMICA?

ORIENT CERAMICA HAS ESTABLISHED A STATE-OF-THE-ART ITALIAN MANUFACTURING FACILITY AND INTRODUCED GRÉS PORCELAIN TILES FIRED IN PAKISTAN'S MOST ADVANCED MAESTRO KILN. OUR DESIGNS ARE PRINTED WITH MULTI-RESOLUTION TECHNOLOGY TO GIVE YOU OUR DESIGNS. CUSTOMERS WITH A NATURAL FINISH.

OUR GRÉS PORCELAIN TILES ARE CUT USING SQUADRA DRY TECHNOLOGY TO ENSURE EACH TILE IS THE SAME SIZE. IT ALSO INCORPORATES SUPERSHINE, A HIGH-GLOSS FINISHING TECHNOLOGY.



**TECHNOLOGIES**

---

OUR UNIQUE QUALITY FEATURES THAT MAKE US DIFFERENT FROM OTHERS AND HELP US MEET INTERNATIONAL STANDARDS.



**GRÈS**  
PORCELAIN

THE ULTIMATE TILE BODY, GUARANTEES DURABILITY AND STRONG FOUNDATION.



**MAESTRO**  
K12 TECHNOLOGY

ENSURES EDGE TO EDGE HOMOGENOUS TEMPERATURE.



**MULTI**  
RESOLUTION  
PRINTING

OPTIMIZED COLOR PROCESSING, LARGER COLOR PALETTE.



**SQUADRA**  
EPT TECHNOLOGY

PROPORTIONATE DIMENSIONS, ABSORBS AND RETAINS MOISTURE.



**PURO**  
ANTIBACTERIAL

ELIMINATES UPTO 99.9% OF BACTERIA AND OTHER HARMFUL MICROORGANISMS.



# **SURFACES / FINISHES**

---



PRODUCTS

---





SURFACE

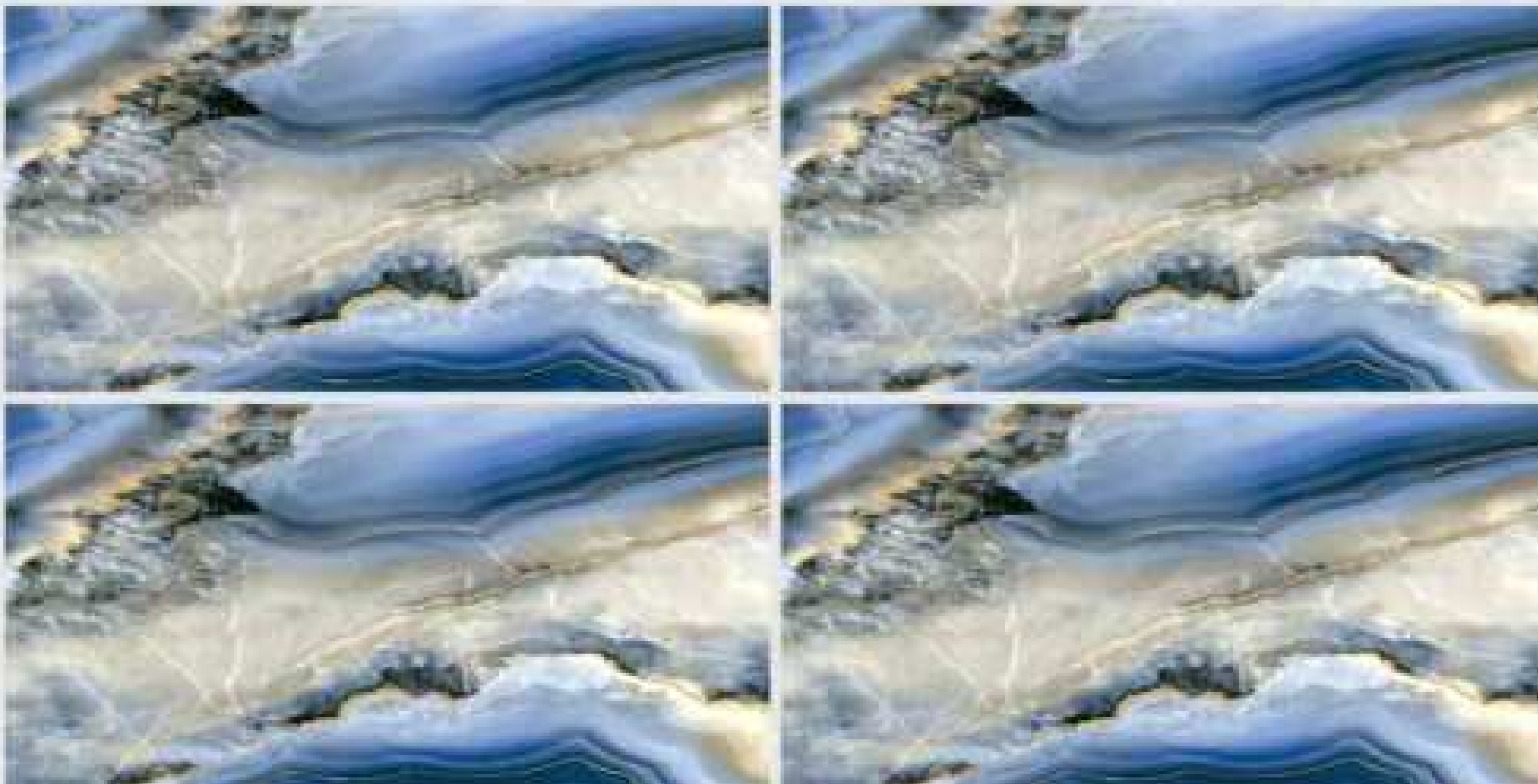


DIAMOND SHINE

## MARMI MARINO

MARMI MARINO MIX DARK  
DIAMOND SHINE  
60X120

AVAILABLE SINGLE FACE







SURFACE



DIAMOND SHINE

## MARMI TRAVERA

MARMI TRAVERA MIX LIGHT  
DIAMOND SHINE  
60X120

AVAILABLE SINGLE FACE







SURFACE



DIAMOND SHINE

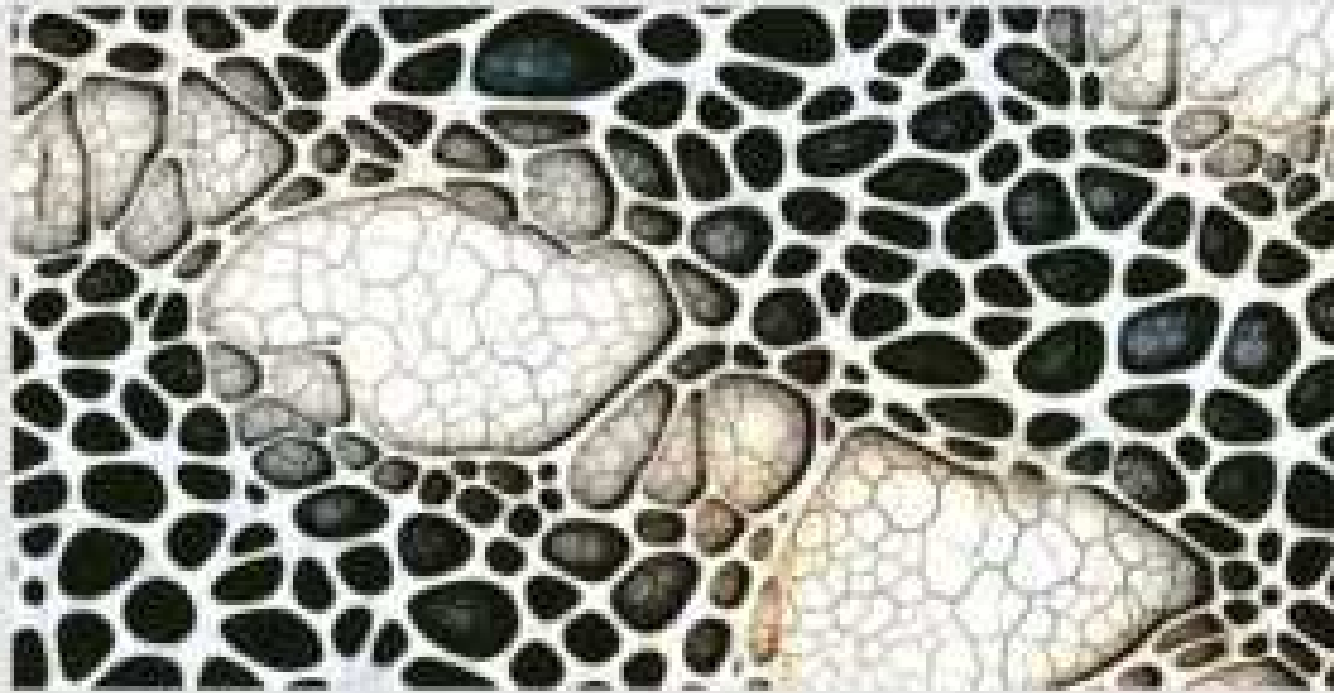
## MARMI DUNE

MARMI DUNE GREY LIGHT  
DIAMOND SHINE  
60X120

AVAILABLE SINGLE FACE







SURFACE

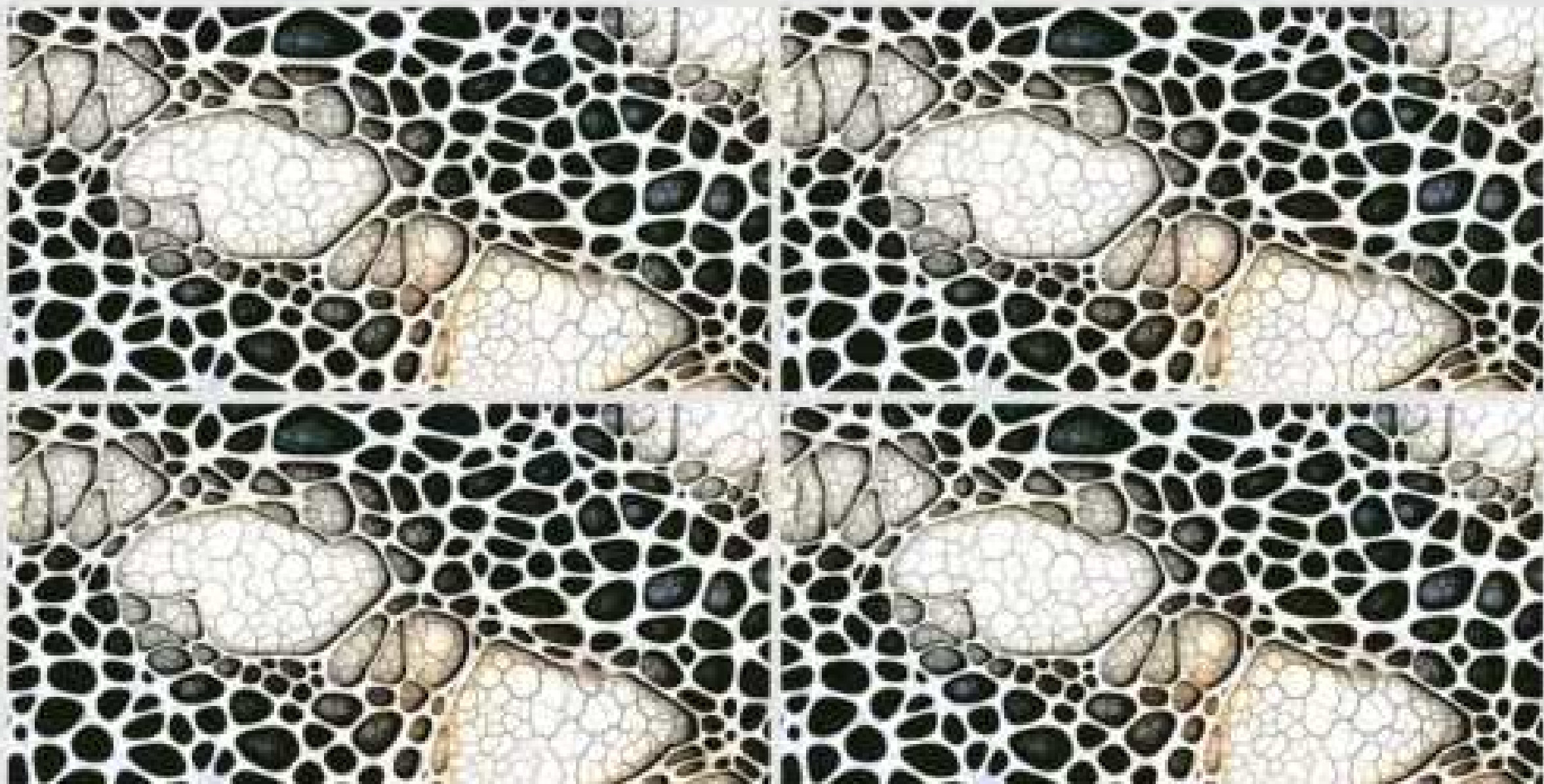


DIAMOND SHINE

## ROCA STEPSTONE

ROCA STEPSTONE MIX DARK  
DIAMOND SHINE  
60X120

AVAILABLE SINGLE FACE







SURFACE



DIAMOND SHINE

## MARMI VELLA

MARMI VELLA MIX DARK  
DIAMOND SHINE  
60X120

AVAILABLE SINGLE FACE







SURFACE

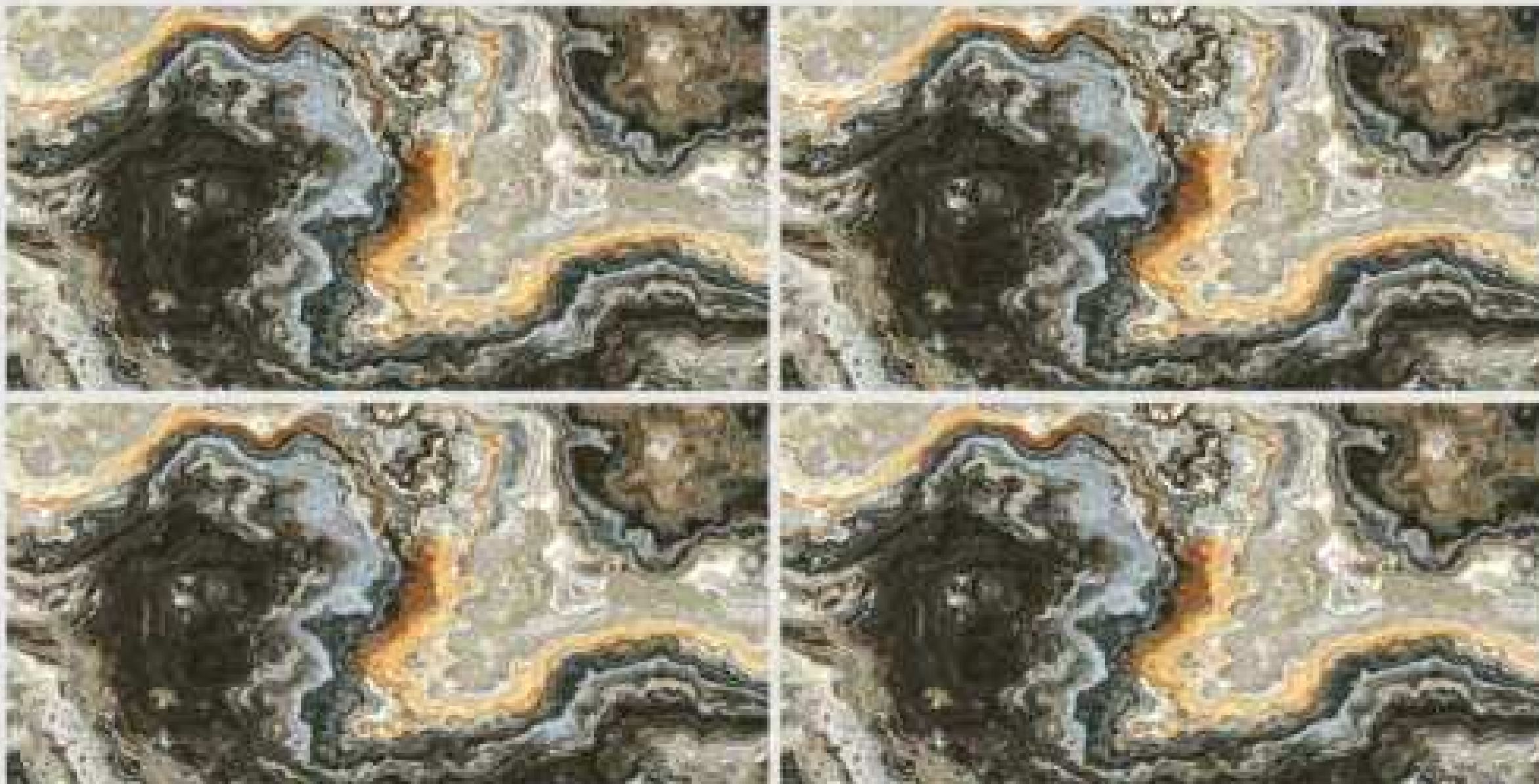


DIAMOND SHINE

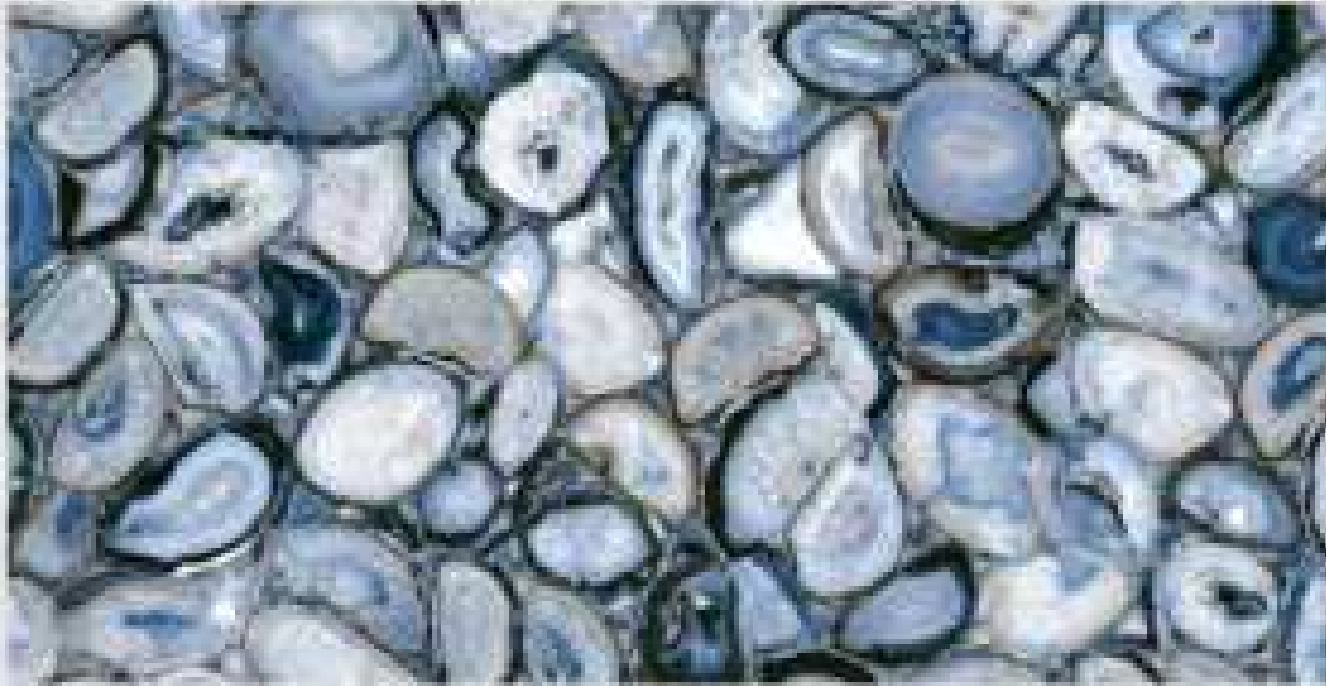
## MARMI GOLDANO

MARMI GOLDANO MIX DARK  
DIAMOND SHINE  
60X120

AVAILABLE SINGLE FACE







SURFACE

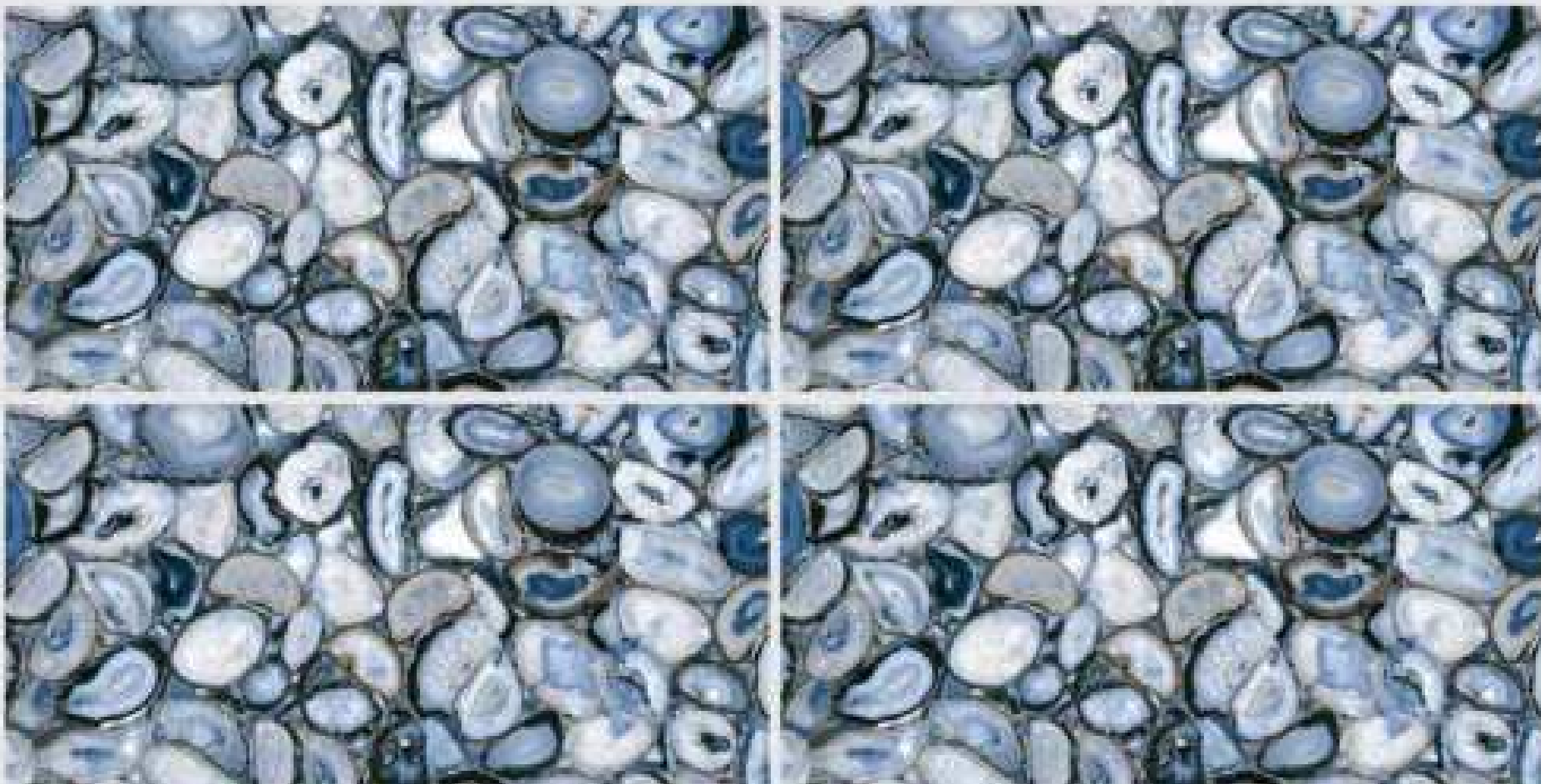


DIAMOND SHINE

## ROCA PEBBLESTONE

ROCA PEBBLESTONE MIX DARK  
DIAMOND SHINE  
60X120

AVAILABLE SINGLE FACE







SURFACE



DIAMOND SHINE

## MARMI ARGENTO

MARMI ARGENTO MIX LIGHT  
DIAMOND SHINE  
60X120

AVAILABLE SINGAL FACE







SURFACE



DIAMOND SHINE

## MARMI APOLLO

MARMI APOLLO OLIVE  
DIAMOND SHINE

60X120

AVAILABLE FACES







SURFACE

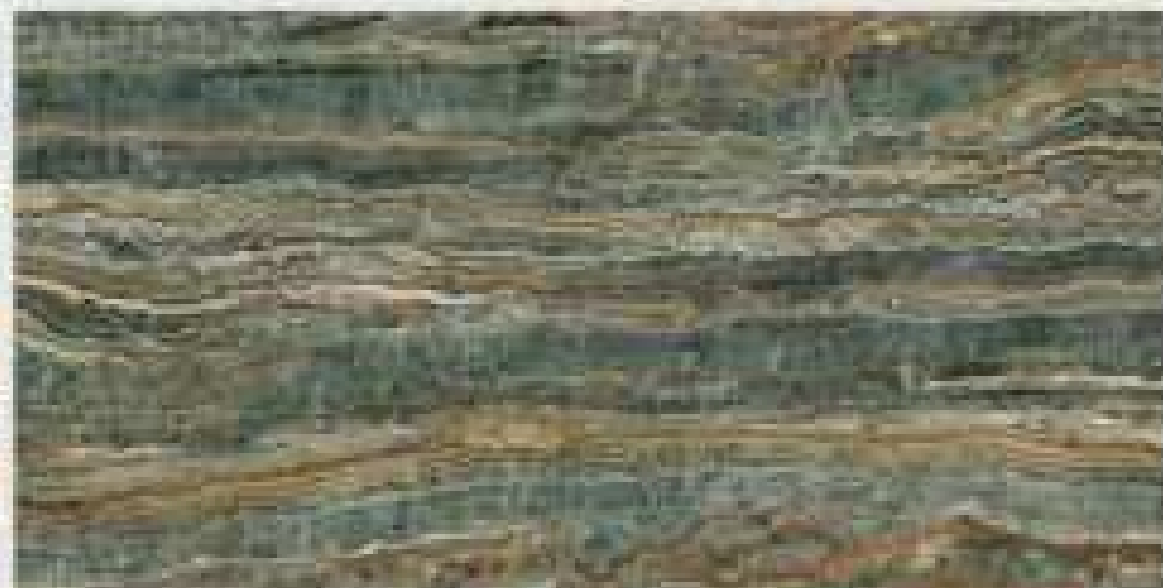
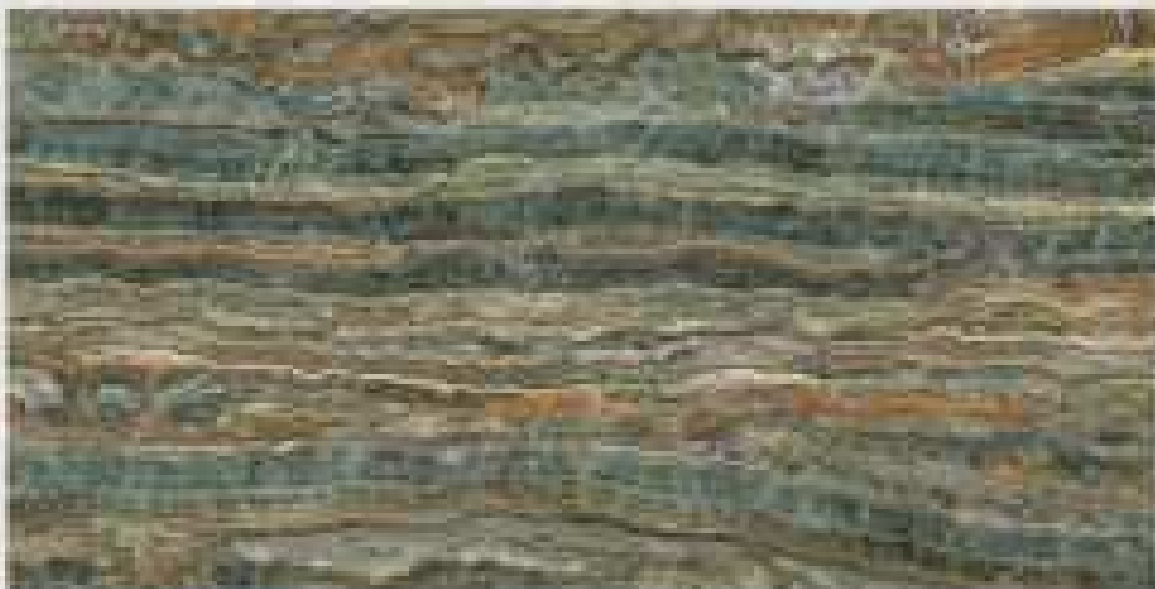


DIAMOND SHINE

## MARMI CLAROS

MARMI CALORS MIX DARKS  
DIAMOND SHINE  
60X120

### AVAILABLE FACES







SURFACE



DIAMOND SHINE

## MARMI TUNDRA

MARMI TUNDRA GREY DARK  
DIAMOND SHINE  
60X120

### AVAILABLE FACES







## MARMI NORDIC

MARMI NORDIC GREY DARK  
DIAMOND SHINE  
60X120

### AVAILABLE FACES



SURFACE



DIAMOND SHINE





SURFACE



DIAMOND SHINE

## MARMI CAESAR

MARMI CAESAR MIX DARK  
DIAMOND SHINE

60X120

AVAILABLE SINGAL FACE







SURFACE



DIAMOND SHINE

## MARMI JADE

MARMI JADE DARK RUST  
DIAMOND SHINE  
60X120

### AVAILABLE FACES







SURFACE



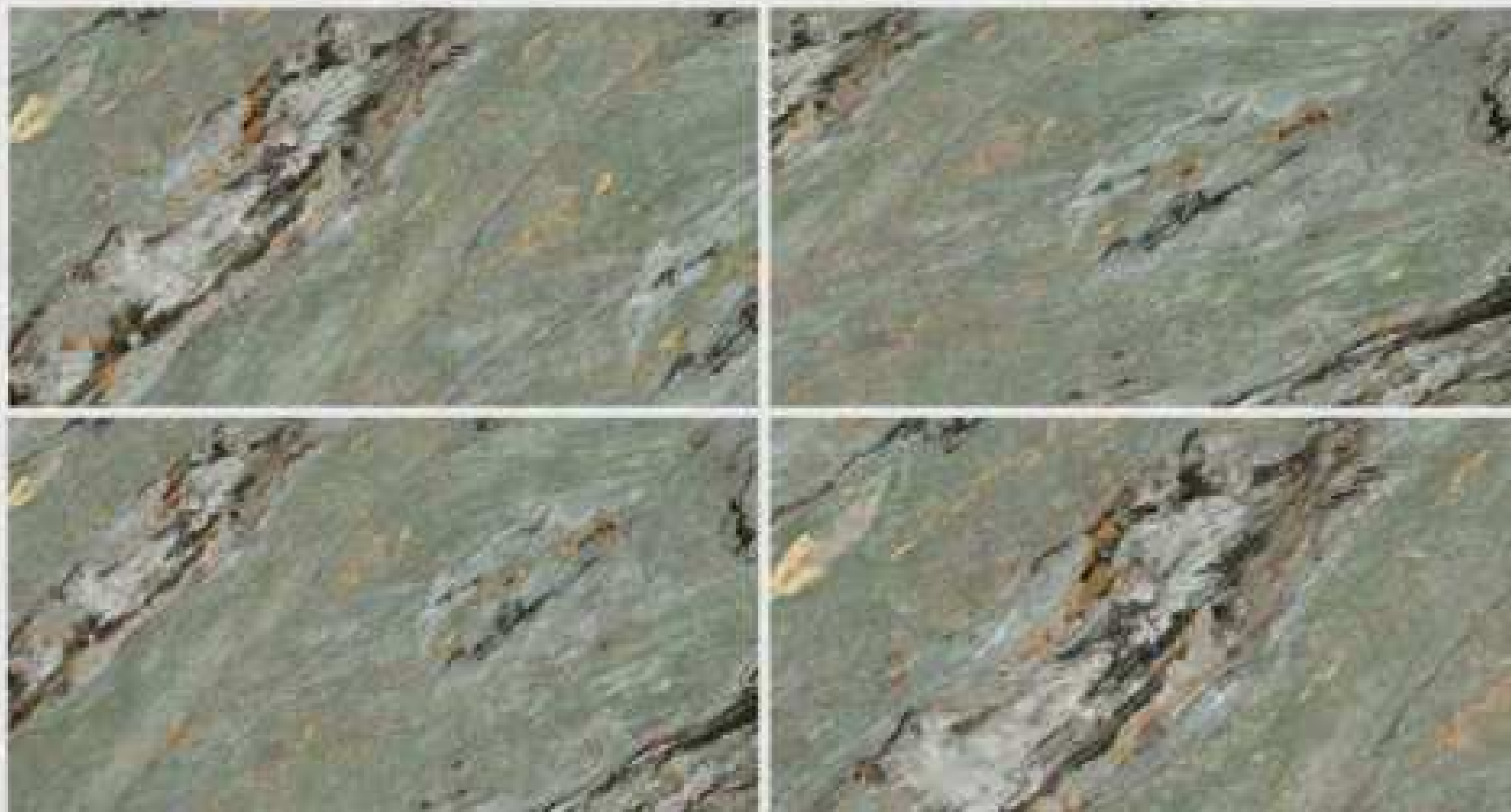
DIAMOND SHINE

## MARMI OLIVER

MARMI OLIVER DARK GREEN  
DIAMOND SHINE

60X120

### AVAILABLE FACES







SURFACE



DIAMOND SHINE

## MARMI BRUNO

MARMI BRUNO ORANGE DARK  
DIAMOND SHINE

60X120

AVAILABLE SINGLE FACE







SURFACE



DIAMOND SHINE

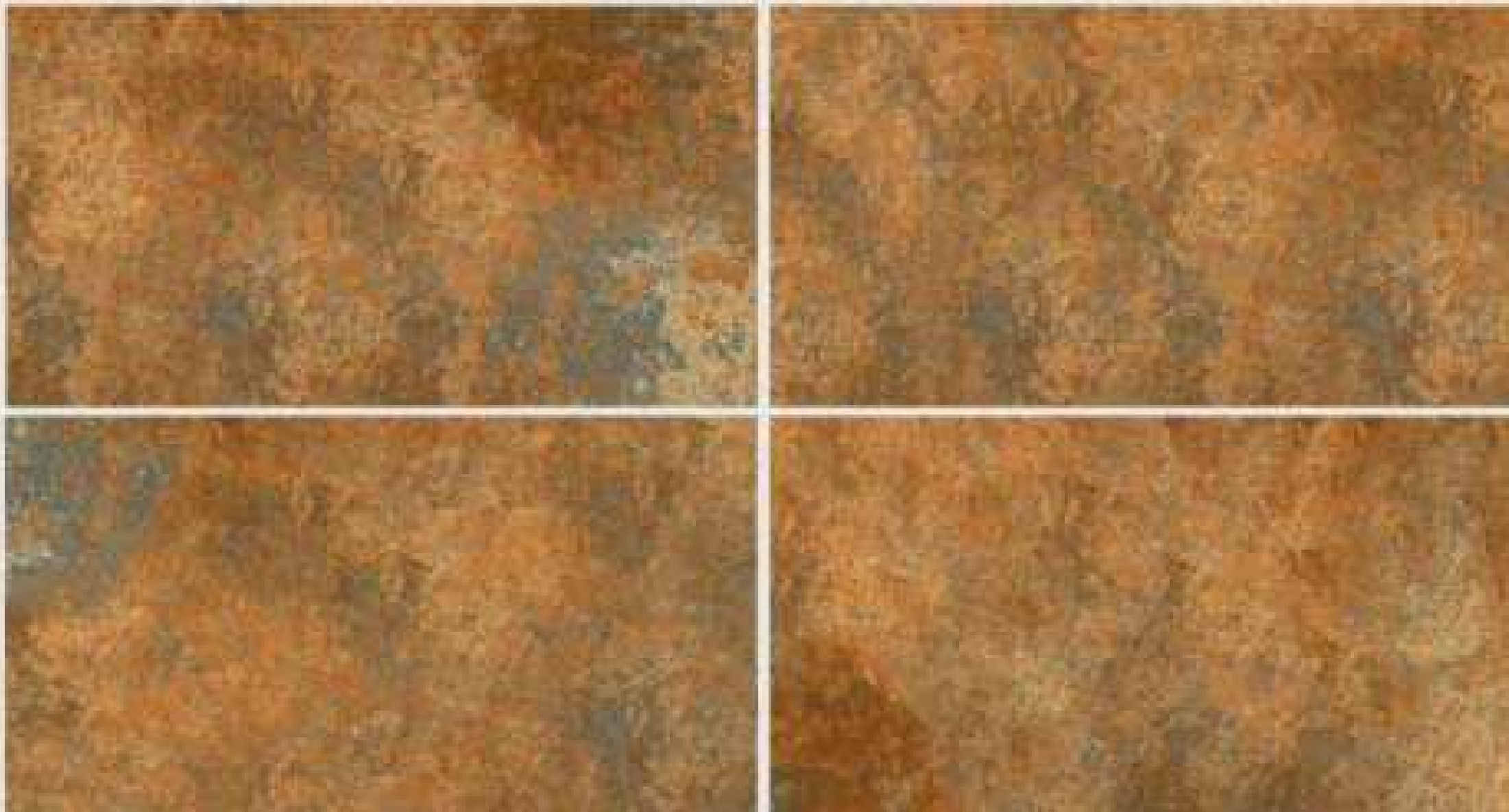
## ROCA NEO BRONZE

---

ROCA NEO BRONZE RUST DARK  
DIAMOND SHINE

60X120

AVAILABLE FACES







SURFACE



DIAMOND SHINE

## ROCA NEVADA

ROCA NEVADA RUST LIGHT  
DIAMOND SHINE

60X120

### AVAILABLE FACES







SURFACE



DIAMOND SHINE

## **ROCA - SAVANNA**

**ROCASAVANNA BEIGE LIGHT  
DIAMOND SHINE**

**60X120**

### AVAILABLE FACES







SURFACE



DIAMOND SHINE

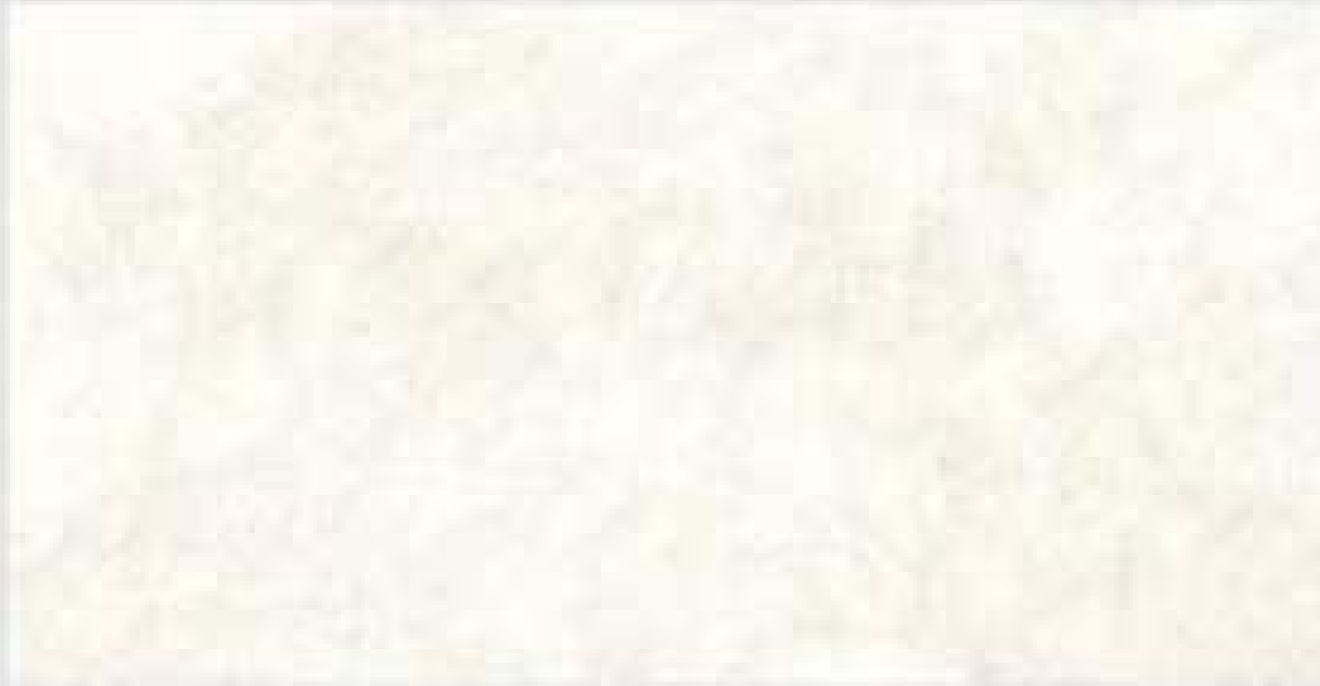
## ROCA MILANO

ROCA MILANO BEIGE DARK  
DIAMOND SHINE

60X120

AVAILABLE FACES





SURFACE

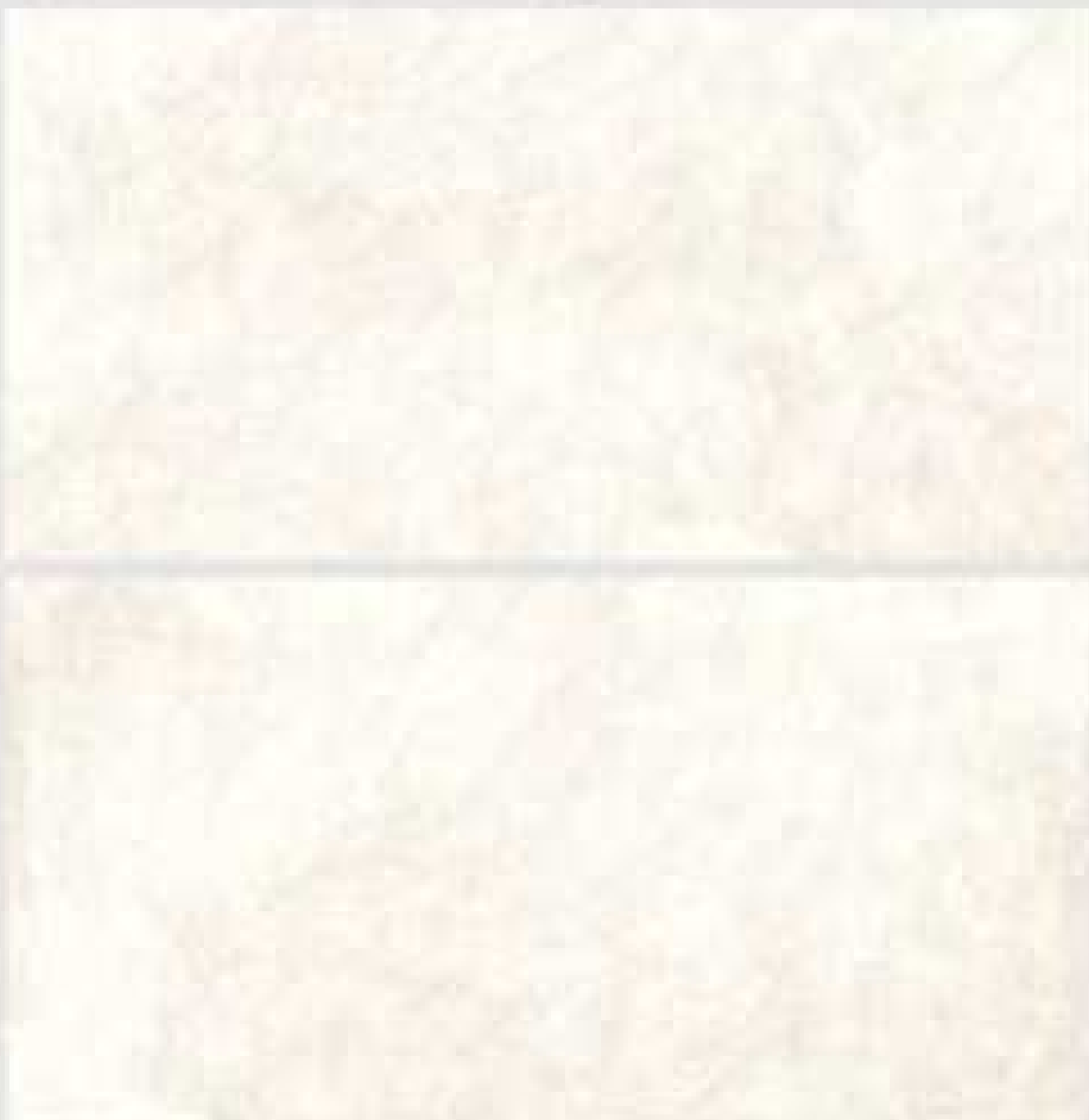


DIAMOND SHINE

## ROCA SAVOY

ROCA SAVOY LIGHT BEIGE  
DIAMOND SHINE  
60X120

### AVAILABLE FACES







SURFACE



DIAMOND SHINE

## ROCA SAVOY

ROCA SAVOY BEIGE DARK  
DIAMOND SHINE  
60X120

### AVAILABLE FACES







SURFACE



DIAMOND SHINE

## DECORO ESTEEM

DECORO ESTEEM GARY DARK  
DIAMOND SHINE

60X120

AVAILABLE SINGAL FACE





SURFACE



DIAMOND SHINE

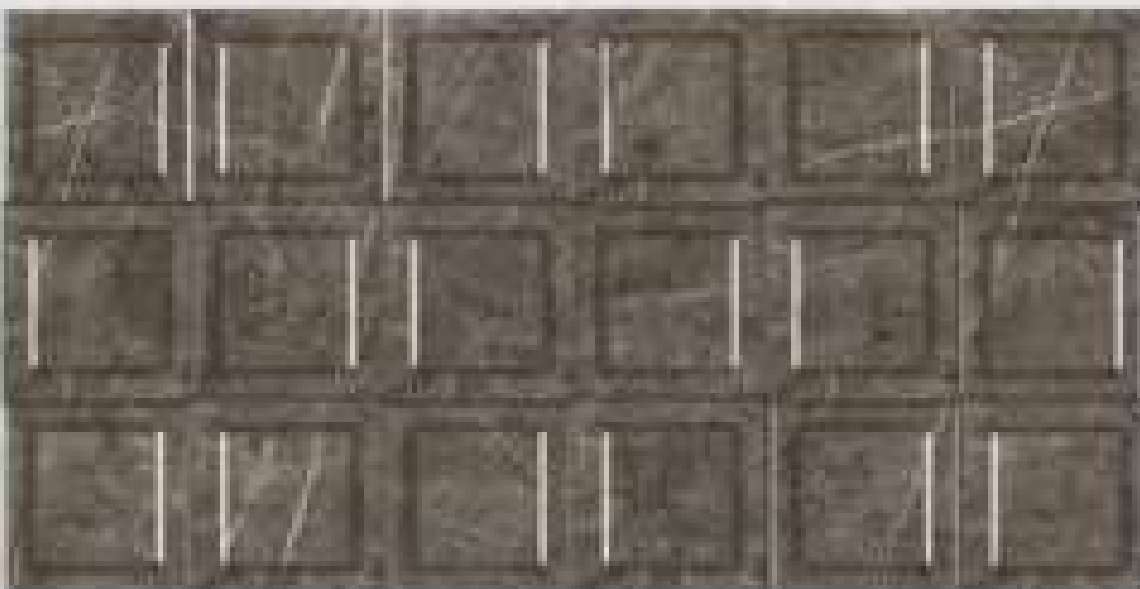
## DECORO VICTORIA

---

DECORO VICTORIA GREY DARK  
DIAMOND SHINE

60X120

AVAILABLE SINGAL FACE







## DECORO FLORA

DECORO FLORA LIGHT BEIGE  
DIAMOND SHINE  
60X120

AVAILABLE SINGLE FACE



SURFACE



DIAMOND SHINE



## DECORO FOREST

---

DECORO FOREST MIX DARK  
DIAMOND SHINE

60X120

AVAILABLE SINGAL FACE



SURFACE



DIAMOND SHINE



## DECORO HARMONY

---

DECORO HARMONY MIX DARK  
DIAMOND SHINE

60X120

AVAILABLE SINGAL FACE



SURFACE



DIAMOND SHINE



SUPERMATTE

MOST DEMANDING PERFORMANCE SPECIFICATIONS,  
ZERO GLOSSY FINISH PROVIDING YOU WITH SUPER-MATTE  
SURFACES.



LUSTRE

A SOFT GLOWING, SHINY & GLITTERY SURFACE CREATED  
BY APPLYING SPECIAL CERAMIC MATERIALS.



ROCKER EFFECT

CARVED TEXTURE ON SURFACES CREATED THROUGH  
SPECIAL CERAMIC MATERIALS AS TO GIVE NATURAL  
MARBLE OR STONE LOOK.



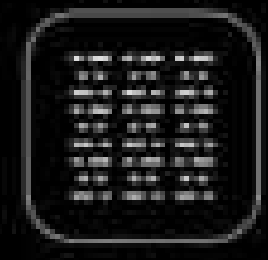
TACTILE EFFECT

MILD CARVED & SMOOTH TEXTURE ON THE SURFACES FOR  
NATURAL SENSE OF FEELING SPECIALLY ON WOOD & FABRICS.



PUNCH

ENGRAVED STRUCTURE TO DESIGN AESTHETIC SCULPTURE  
ON THE BODY SURFACE ACCORDING TO DESIGN DEMAND.



DURA GRIP

NON SLIPPERY OR NON-SKID SURFACE.



SUPERSHINE

MODERN ENVIRONMENTAL FRIENDLY POLISHING METHOD ENSURING SCRATCH FREE AND ANTIBACTERIAL FINISH.



BODY PLUS

HOMOGENEOUS TILES, ALSO CALLED FULL BODY TILES OR THROUGH-BODY TILES, IS A TYPE OF SPECIAL UNGLAZED TILES WHOSE SURFACE COLOR IS THE SAME AS THE ENTIRE TILE.



LAPPATO

SEMI GLOSSY APPEARANCE ON MATTE SURFACE BY APPLYING BUFFING PROCESS.



DIAMOND SHINE

SUPERLATIVE DEGREE OF SUPERSHINE PROCESSED SURFACES.



CRISTAL EFFECT

EMBOSED TRANSPARENT OR TRANSLUCENT SURFACES IN DIFFERENT SHAPES SPREAD OVER SURFACE IN DROPLETS OR OTHER AESTHETIC FORMS.



VELVET MATTE

SURFACE WITH UNIQUE SOFT & SILKY TOUCH.



**Sustainable Management System Inc.**  
**Certificate of Registration**

*This is to certify that, the*  
**Management Systems of**  
**Orient Material Private Limited**

Plot # 354, FIEDMC Industrial Area  
Near M3 - Sahianwala Interchange, Faisalabad, Pakistan  
*has been assessed and registered against the provision of*

**ISO 9001:2015**  
**Quality Management Systems**  
*for the following scope*

**Manufacturer, Supplier & Exporter**  
**of Porcelain Floor Tiles**

Initial Issue Date : 30-Mar-23  
Current Issue Date : 30-Mar-23  
Valid Till : 29-Mar-24  
1st Surveillance Due Date : 29-Feb-24  
2nd Surveillance Due Date : 28-Feb-25

Registration Number : SMS-2022294  
Certificate Number : SMS-MS-22394  
EA Code : 28  
Exclusion : 8.3  
Issue No : 01

Approved By:

A handwritten signature in black ink, appearing to be 'MM' followed by a stylized flourish.

President & CEO



This is an accredited certificate authorized for issue by Accreditation Service for Certifying Bodies LLC who has assessed Sustainable Management System Inc. against defined criteria and in cognizance of ISO 17021:2015 'Conformity Assessment - Requirements for bodies providing audit and certification of management systems. This certificate is only valid when confirmed by the register listed in the International Register of Quality Assessed Organizations and Sustainable Management System Inc. The validity of this certificate can be checked at [www.irqao.com](http://www.irqao.com) and [www.smscert.com/certificate-check](http://www.smscert.com/certificate-check)

**This certificate is the property of Sustainable Management System Inc.**  
3706 Suite#6B, 69 Street, Woodside, New York 11377, USA  
E-mail: [info@smscert.com](mailto:info@smscert.com), web: [www.smscert.com](http://www.smscert.com)



**Sustainable Management System Inc.**  
**Certificate of Registration**

*This is to certify that, the*  
**Management Systems of**  
**Orient Material Private Limited**

Plot # 354, FIEDMC Industrial Area  
Near M3 - Sahianwala Interchange, Faisalabad, Pakistan

*has been assessed and registered against the provision of*

**ISO 14001:2015**  
**Environmental Management Systems**  
*for the following scope*

**Manufacturer, Supplier & Exporter**  
**of Porcelain Floor Tiles**

Initial Issue Date : 30-Mar-23  
Current Issue Date : 30-Mar-23  
Valid Till : 29-Mar-24  
1st Surveillance Due Date : 29-Feb-24  
2nd Surveillance Due Date : 28-Feb-25

Registration Number : SMS-2022295  
Certificate Number : SMS-MS-22395  
EA Code : 28  
Exclusion : N/A  
Issue No : 01

Approved By:

A handwritten signature in black ink, appearing to be 'mm' followed by a large '2'.

President & CEO



This is an accredited certificate authorized for issue by Accreditation Service for Certifying Bodies LLC who has assessed Sustainable Management System Inc. against defined criteria and in cognizance of ISO 17021:2015 'Conformity Assessment - Requirements for bodies providing audit and certification of management systems. This certificate is only valid when confirmed by the register listed in the International Register of Quality Assessed Organizations and Sustainable Management System Inc. The validity of this certificate can be checked at [www.irqao.com](http://www.irqao.com) and [www.smscert.com/certificate-check](http://www.smscert.com/certificate-check)

**This certificate is the property of Sustainable Management System Inc.**  
3706 Suite#6B, 69 Street, Woodside, New York 11377, USA  
E-mail: [info@smscert.com](mailto:info@smscert.com), web: [www.smscert.com](http://www.smscert.com)



## Foundary Service Centre (FSC)

University of Engineering and Technology Lahore-54890, Pakistan

Ph: 042 99029387 Fax: 042 99250202 Email:directorfsc@uet.edu.pk

Dated:29.11.2022

FSC/UET/Chem/11/2022/S14

Orient Group of Companies,

Multan Road Lahore.

### Subject: Water Absorption Test for Tiles

With reference to Ref No. Nil dated: 22-11-2022, result of the provided sample/s is reported below.

Sr. No.	Sample	Water Absorption
		%
1	Sample 1	0.4

Prof.  Rafiq  
Director (FSC)  
UNIVERSITY OF ENGINEERING & TECHNOLOGY LAHORE

Note: The above results pertain to the supply samples only. As the sampling has been done by the client, therefore its authenticity lies with them. After issuance of the report, the samples will be retained for 15 days until negotiated otherwise. The non-negotiable results will not be challenged.

Foundary Service Centre, Opposite Gate no 5. near Industrial Manufacturing Department, University

# **ORIENTCERAMICA**

📍 **ORIENT MATERIAL (Pvt. Ltd.)**

☎ **UAN: 011-ORIENT (674-388)**

✉ **Email: [info@orientceramica.com](mailto:info@orientceramica.com)**

📍 **Head Office: Orient Group, 28km, Multan Rd, Lahore, Pakistan**

📍 **Factory: Plot#35A, M3 Industrial Estate, FIEDMC Sahlanwala, Faisalabad, Pakistan**

